

PRODUCTS CATALOGUE

Professional Inkjet Coding &
Marking Solution



Environmentally Friendly Products



Designed and Made in Taiwan



Safe, Reliable



DOWN JET

立揚科技噴墨股份有限公司
LE YANG TECHNOLOGY CO., LTD.

SinLeTai

DAILY JET

興立台實業有限公司
SINLETAI CO., LTD.

FUNAI

About us

Innovation, Customization, Service

SINLETAI CO., LTD. founded in 2000.

LE YANG TECHNOLOGY CO., LTD. founded in 2018.

We obtained technology license from an internationally renowned maker HP, IUT, FUNAI, and SEIKO EPSON.

2000

SINLETAI
Founded

2005

Obtained HP
technology license

2014

Product sales
exceeded 10,000 units

2018

LE YANG Founded

2018

Obtained IUT
technology license

SINLETAI

Our Company

Administration & Sales Department

Administration & Sales Department

R&D Department

Production department

We are a Taiwan-based Inkjet printer manufacturer, and have a superior R&D team with over 20 years expertise in the Inkjet printer industry and comprehensively expert in the software, hardware, firmware and mechanical fields.

We develop innovative products that allow our customers to operate more efficiently and sustainably. We are devoted to creating the most effective and environmentally friendly solutions for the industries we serve, including coding and marking, printing, packaging, and medical.

We understand the needs of customers in the fast growing, dynamic markets in Asia and around the globe.

We are constantly investing in the research and development state of the art technology to continually build on our diverse portfolio of products, which currently includes thermal inkjet and piezo inkjet variable data printers, ink solutions, and assist global clients to make OEM/ODM product to reinforce the leading position in the different markets.



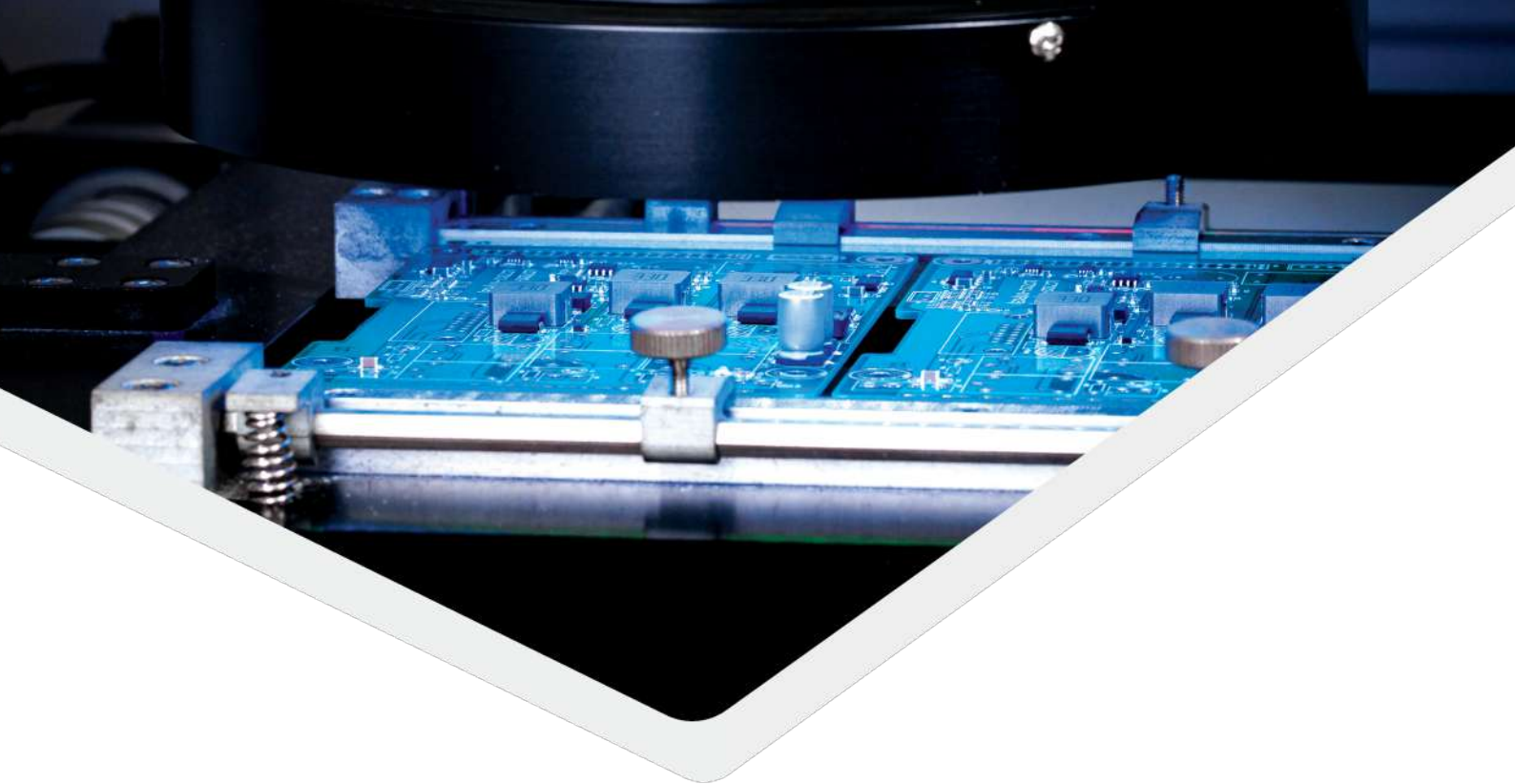
2019

2023

Obtained FUNAI
technology license

Obtained SEIKO EPSON
technology license





Our Service

Distribution, ODM, OEM

Agent wanted in various countries/regions

Distribution Item : Coding & Marking TIJ & PIJ printer

ODM Solution : TIJ & PIJ products

OEM Solution : Coding & Marking TIJ & PIJ printer



Our Certification

Environment, Social, Governance

ISO, CE, SGS



Focus on information security
and reliable products



Focus on sustainable management of
the global environment

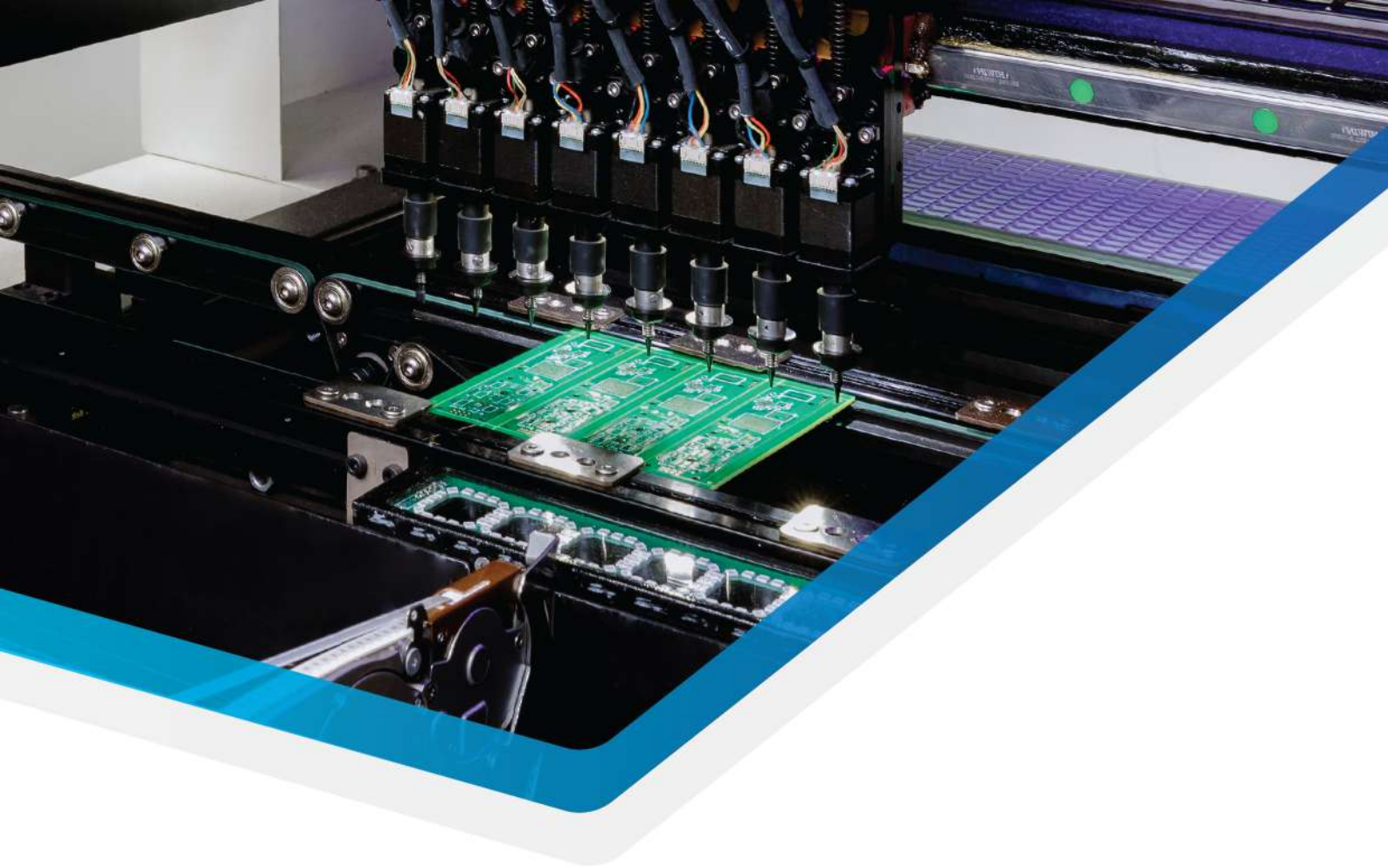


100% Taiwan design and manufacture



Focus on environmental protection





Product Introduction

In Line Printers

Entry model

SP-111

OJ-112

FJ-113

Advanced model

SP-121

OJ-122

FJ-123

Premium model

PJ-224

OJ-242

SP-241

FJ-243

Handheld Printers

HP1000

HP1200

HP1600

OJ100H

OJ110H

OJ120H



Versatile Ink Solution

Aqueous ink

Oils ink

Solvents ink

UV ink

Bulk ink system



Peripheral Products

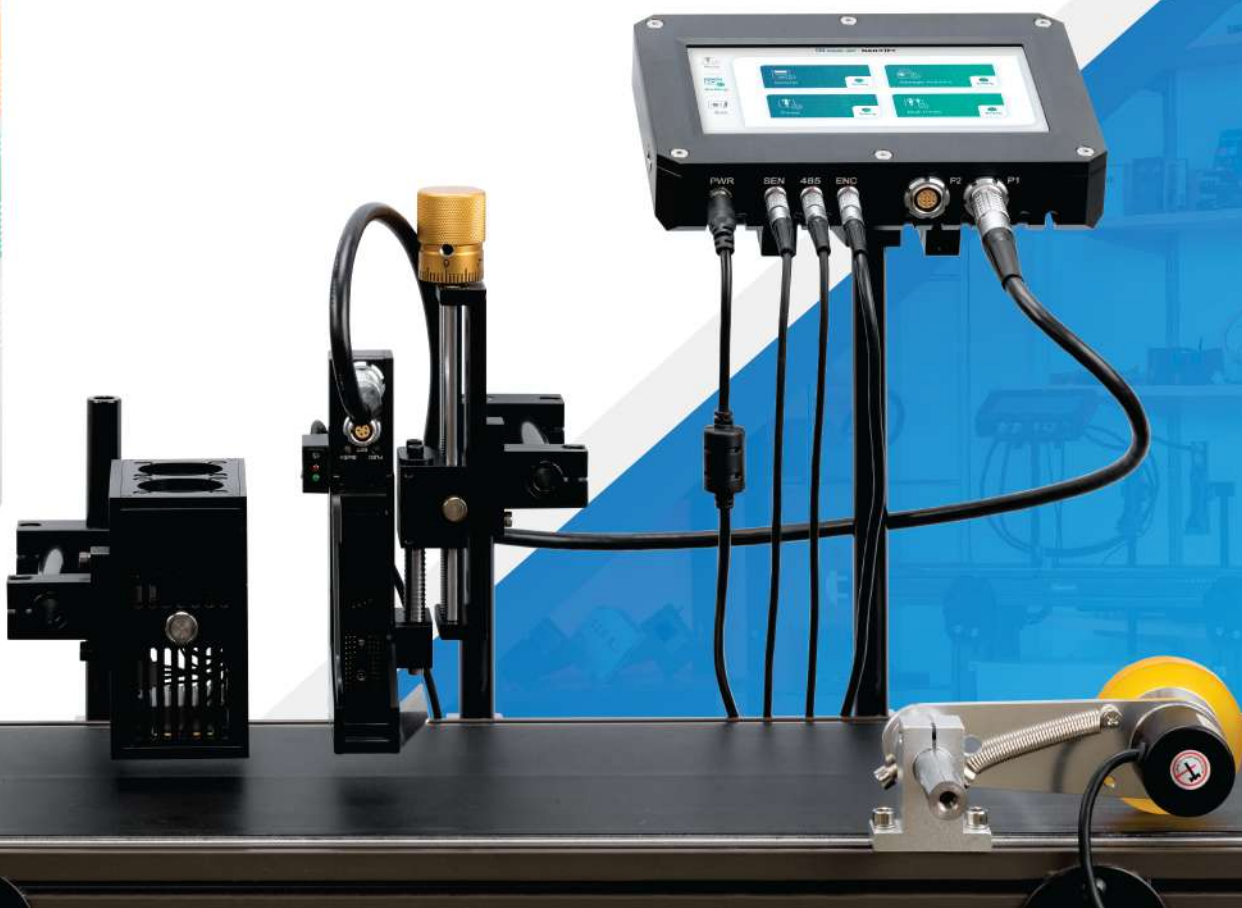
Industrial UV Curing Lamp

Flexible Slide

3-color LED Alarm Lamp

Slide Table

Synchronous Encoder



SP-111 (1/2" Printhead)

7" Touch Screen Controller With High-speed TIJ 2.5 Single Print Head for quality printing

Key Features

Designed with easy usability, versatile installation and, setup, can be applied in these industries: Food, FMCG, Pharma, Cosmetics, Beverages, Breweries & Distilleries, Extrusion pipes & cables, Wood/Laminates, Electronics and Agriculture/Aquaculture.

Best Suited For	High resolution, High-Speed Applications
Touch Screen Area	7" Inch Screen
Print Quality	300 dpi @ Print Speed up to 90m/min, 600 dpi High-Resolution Prints
Print heads	Support single 1/2" printhead ; TIJ 2.5 Inks



Benefits

Sleek & Compact Design	User friendly 7" touchscreen color display with WYSIWYG graphical interface
Product Design	Sleek & streamlined for easy integration with 3rd party products
User Interface	Variable database function to meet the requirements in all kinds of applications
Ink Selection	Wide selection of TIJ2.5 Aqueous, Solvents inks

Specifications

RESOLUTION	Max 600 dpi
PRINT SPEED	Max 90m/min @ 300x100dpi
LENGTH TEMPLATE	Maximum length of template up to 1500mm
MENU LANGUAGES	English (default), German, Vietnamese, Chinese, Korean, Russian, Turkish, Portuguese, Spanish, Polish, Greek, Italian & many others
PRINTABILITY	Text, Counter, Box/Lot, Datetime, Expiry Date, Julian Date, Shiftcode, Image Database (TXT,CSV, SQL,PDF,JSON [PC software]) Barcodes (Code 11, Code 39, Code 128, EAN, QR, Datamatrix, GS1 Datamatrix, ect.) Dynamic Real-Time Printing (Print Online Data)
PRINT HEADS	Connect to a single printhead
MEMORY	Store up to 100000 messages on the printer' s memory
INK MANAGEMENT	Automatic recognition ink type and ink parameters Nozzle warming, auto-jet and self-cleaning capabilities to extend cartridge lifetime Nozzle status checking Variety of TIJ 2.5 inks type and colors available
ADVANCE	Free design in template up to half an inch (12.7mm) Integrate with other devices (PLC, Camera, Check-weigher, ect.) via
RS485, NETWORK	Real-time Printing
USB	Data upload, Backup & Recovery via USB

WYSIWYG (what you see is what you get)



SP-111

OJ-112 (1" Printhead)

7" Touch Screen Controller With TIJ One Inch Single Print Head for high quality 1" outer case printing

Key Features

Designed with easy usability, versatile installation, and setup, for multiple industries including : Food, Beverages, FMCG, Cosmetics, and many more.

Best Suited For	High-Resolution Outer Case Packaging, Big Printing Size & Range
Touch Screen Area	7" Inch Screen
Print Quality	300 dpi @ Print Speed up to 40m/min
Print heads	Support single 1-Inch printhead ; TIJ 1-Inch Inks



Benefits

Sleek & Compact Design	User friendly 7" touchscreen color display with WYSIWYG graphical interface
Product Design	Sleek & streamlined for easy integration with 3rd party products
User Interface	Variable database function to meet the requirements in all kinds of applications
Ink Selection	Wide selection of TIJ 1-Inch Aqueous, Solvents inks

Specifications

RESOLUTION

PRINT SPEED Max 40m/min @ 300x300dpi

LENGTH TEMPLATE Maximum length of template up to 1500mm

MENU LANGUAGES English (default), German, Vietnamese, Chinese, Korean, Russian, Turkish, Portuguese, Spanish, Polish, Greek, Italian & many others

PRINTABILITY Text, Counter, Box/Lot, Datetime, Expiry Date, Julian Date, Shiftcode, Image
Database (TXT,CSV, SQL,PDF,JSON [PC software])
Barcodes (Code 11, Code 39, Code 128, EAN, QR, Datamatrix, GS1 Datamatrix, ect.)
Dynamic Real-Time Printing (Print Online Data)

PRINT HEADS Connect to a single printhead

MEMORY Store up to 100000 messages on the printer's memory

INK MANAGEMENT Automatic recognition ink type and ink parameters
Nozzle warming, auto-jet and self-cleaning capabilities to extend cartridge lifetime
Nozzle status checking
Variety of TIJ 1-Inch inks type and colors available

ADVANCE Free design in template up to 1-Inch (25.4mm)
Integrate with other devices (PLC, Camera, Check-weigher, ect.) via

RS485, NETWORK Real-time Printing

USB Data upload, Backup & Recovery via USB

WYSIWYG (what you see is what you get)



OJ-111

FJ-113 (FUNAI Printhead)

7" Touch Screen Controller With FUNAI TIJ Single Print Head for uneven surface and long throw distance printing

Key Features

Designed with easy usability, versatile installation and setup, can be applied across industries: Food, Beverages, FMCG, Cosmetics and many more.

Best Suited For	Uneven substrates up to 10mm
Touch Screen Area	7" Inch Screen
Print Quality	300x200 dpi @ Print Speed up to 40m/min
Print heads	Support single FUNAI printhead ; FUNAI TIJ Inks



Benefits

Sleek & Compact Design	User friendly 7" touchscreen color display with WYSIWYG graphical interface
Product Design	Sleek & streamlined for easy integration with 3rd party products
User Interface	Variable database function to meet the requirements in all kinds of applications
Ink Selection	Wide selection of FUNAI Aqueous & Solvents inks

Specifications

RESOLUTION	Max 300 dpi
PRINT SPEED	Max 40m/min @ 300x200dpi
LENGTH TEMPLATE	Maximum length of template up to 1500mm
MENU LANGUAGES	English (default), German, Vietnamese, Chinese, Korean, Russian, Turkish, Portuguese, Spanish, Polish, Greek, Italian & many others
PRINTABILITY	Text, Counter, Box/Lot, Datetime, Expiry Date, Julian Date, Shiftcode, Image Database (TXT,CSV, SQL,PDF,JSON [PC software]) Barcodes (Code 11, Code 39, Code 128, EAN, QR, Datamatrix, GS1 Datamatrix, ect.) Dynamic Real-Time Printing (Print Online Data)
PRINT HEADS	Connect to a single printhead
MEMORY	Store up to 100000 messages on the printer' s memory
INK MANAGEMENT	Automatic recognition ink type and ink parameters Nozzle warming, auto-jet and self-cleaning capabilities to extend cartridge lifetime Nozzle status checking Variety of TIJ 1-Inch inks type and colors available
ADVANCE	Free design in template up to 13.5mm Integrate with other devices (PLC, Camera, Check-weigher, ect.) via
RS485, NETWORK	Real-time Printing
USB	Data upload, Backup & Recovery via USB

WYSIWYG (what you see is what you get)

FJ-113



SP-121 / OJ-122 / FJ-123

7" Touch Screen Controller With 2 Print Heads (Supports Connecting up to 2 same or different printheads)

SP-121

(1/2" Printhead)

7" Touch Screen Controller
With High-speed TIJ 2.5 Print
Head for quality printing

OJ-122

(1" Printhead)

7" Touch Screen Controller
With TIJ One Inch Print Head
for high quality 1" outer case
printing

FJ-123

(FUNAI Printhead)

7" Touch Screen Controller
With FUNAI TIJ Print Head for
uneven surface and long
throw distance printing



Key Features

Designed with easy usability, versatile installation and, setup, can be applied in these industries: Food, FMCG, Pharma, Cosmetics, Beverages, Breweries & Distilleries, Extrusion pipes & cables, Wood/Laminates, Electronics and Agriculture/Aquaculture.

Best Suited For	High resolution, High-Speed Applications
Touch Screen Area	7" Inch Screen
Print Quality	1/2" printhead: 300 dpi @ Print Speed up to 90m/min, 600 dpi High-Resolution Prints 1" printhead: 300 dpi @ Print Speed up to 40m/min FUNAI printhead: 300x200 dpi @ Print Speed up to 40m/min
Print heads	Connects up to 2 printheads (1/2" printhead, 1" printhead, FUNAI printhead) TIJ 2.5 Inks, TIJ 1-Onch Inks, FUNAI TIJ Inks

Benefits

Sleek & Compact Design	User friendly 7" touchscreen color display with WYSIWYG graphical interface
Product Design	Sleek & streamlined for easy integration with 3rd party products
User Interface	Variable database function to meet the requirements in all kinds of applications
Ink Selection	1/2" printhead: Wide selection of TIJ2.5 Aqueous, Solvents inks 1" printhead: Wide selection of TIJ 1-Onch Aqueous, Solvents inks FUNAI printhead: Wide selection of FUNAI TIJ Aqueous, Solvents inks

Specifications

RESOLUTION	1/2" printhead: Max 600 dpi 1" printhead: Max 300 dpi FUNAI printhead: Max 300 dpi
PRINT SPEED	1/2" printer: Max 90m/min @ 300x100dpi 1" printhead: Max 40m/min @ 300 dpi FUNAI printhead: Max 40m/min @ 300x200 dpi
LENGTH TEMPLATE	Maximum length of template up to 1500mm
MENU LANGUAGES	English (default), German, Vietnamese, Chinese, Korean, Russian, Turkish, Portuguese, Spanish, Polish, Greek, Italian & many others
PRINTABILITY	Text, Counter, Box/Lot, Datetime, Expiry Date, Julian Date, Shiftcode, Image Database (TXT,CSV, SQL,PDF,JSON [PC software]) Barcodes (Code 11, Code 39, Code 128, EAN, QR, Datamatrix, GS1 Datamatrix, ect.) Dynamic Real-Time Printing (Print Online Data)
PRINT HEADS	Connects up to 2 same or different printheads
MEMORY	Store up to 100000 messages on the printer' s memory
INK MANAGEMENT	Automatic recognition ink type and ink parameters Nozzle warming, auto-jet and self-cleaning capabilities to extend cartridge lifetime Nozzle status checking Variety of TIJ 2.5, 1-Onch, FUNAI inks type and colors available
ADVANCE	Free design in template up to 1-Inch (12.7mm, 13.5mm, 25.4mm) Integrate with other devices (PLC, Camera, Check-weigher, ect.) via
RS485, NETWORK	Real-time Printing
USB	Data upload, Backup & Recovery via USB

WYSIWYG (what you see is what you get)

PJ-224 (PIJ 7" Printhead)

7" Touch Screen Controller With 2 Print Heads
(Supports Connecting up to 2 PIJ 7" printheads)
With High-speed PIJ Print Head for quality printing

Key Features

Designed with easy usability, versatile installation and, setup, can be applied in these industries: Food, FMCG, Pharma, Cosmetics, Beverages, Breweries & Distilleries, Extrusion pipes & cables, Wood/Laminates, Electronics and Agriculture/Aquaculture.

Best Suited For	High resolution, High-Speed Applications, Big Printing Size & Range
Touch Screen Area	7" Inch Screen
Print Quality	PIJ 7" printhead: 180 dpi @ Print Speed up to 240m/min
Print heads	Connects up to 2 printheads; PIJ Inks

Benefits

Sleek & Compact Design	User friendly 7" touchscreen color display with WYSIWYG graphical interface
Product Design	Sleek & streamlined for easy integration with 3rd party products
User Interface	Variable database function to meet the requirements in all kinds of applications
Ink Selection	Wide selection of PIJ Aqueous, Solvents, Oils, UV inks



Specifications

RESOLUTION	Max 180 dpi
PRINT SPEED	Max 240m/min @ 180dpi
LENGTH TEMPLATE	Maximum length of template up to 11000mm
MENU LANGUAGES	English (default), German, Vietnamese, Chinese, Korean, Russian, Turkish, Portuguese, Spanish, Polish, Greek, Italian & many others
PRINTABILITY	Text, Counter, Box/Lot, Datetime, Expiry Date, Julian Date, Shiftcode, Image Database (TXT,CSV, SQL,PDF,JSON [PC software]) Barcodes (Code 11, Code 39, Code 128, EAN, QR, Datamatrix, GS1 Datamatrix, ect.) Dynamic Real-Time Printing (Print Online Data)
PRINT HEADS	Connects up to 2 PIJ printheads
MEMORY	Store up to 100000 messages on the printer' s memory
INK MANAGEMENT	Automatic recognition ink type and ink parameters Nozzle warming, auto-jet and self-cleaning capabilities to extend cartridge lifetime Nozzle status checking Variety of PIJ inks type and colors available
ADVANCE	Free design in template up to 7-Inch (177.8mm) Integrate with other devices (PLC, Camera, Check-weigher, ect.) via
RS485, NETWORK	Real-time Printing
USB	Data upload, Backup & Recovery via USB

WYSIWYG (what you see is what you get)



SP-241 / OJ-242 / FJ-243

7" Touch Screen Controller With 4 Print Heads
(Supports Connecting up to 4 same or different printheads)

SP-241

(1/2" Printhead)

7" Touch Screen Controller
With High-speed TIJ 2.5 Print
Head for quality printing

OJ-242

(1" Printhead)

7" Touch Screen Controller
With TIJ One Inch Print Head
for high quality 1" outer case
printing

FJ-243

(FUNAI Printhead)

7" Touch Screen Controller
With FUNAI TIJ Print Head for
uneven surface and long
throw distance printing



Key Features

Designed with easy usability, versatile installation and, setup, can be applied in these industries: Food, FMCG, Pharma, Cosmetics, Beverages, Breweries & Distilleries, Extrusion pipes & cables, Wood/Laminates, Electronics and Agriculture/Aquaculture.

Best Suited For	High resolution, High-Speed Applications
Touch Screen Area	7" Inch Screen
Print Quality	1/2" printhead: 300 dpi @ Print Speed up to 90m/min, 600 dpi High-Resolution Prints 1" printhead: 300 dpi @ Print Speed up to 40m/min FUNAI printhead: 300x200 dpi @ Print Speed up to 40m/min
Print heads	Connects up to 4 printheads (1/2" printhead, 1" printhead, FUNAI printhead) TIJ 2.5 Inks, TIJ 1-Onch Inks, FUNAI TIJ Inks

Benefits

Sleek & Compact Design	User friendly 7" touchscreen color display with WYSIWYG graphical interface
Product Design	Sleek & streamlined for easy integration with 3rd party products
User Interface	Variable database function to meet the requirements in all kinds of applications
Ink Selection	1/2" printhead: Wide selection of TIJ2.5 Aqueous, Solvents inks 1" printhead: Wide selection of TIJ 1-Onch Aqueous, Solvents inks FUNAI printhead: Wide selection of FUNAI TIJ Aqueous, Solvents inks

Specifications

RESOLUTION	1/2" printhead: Max 600 dpi 1" printhead: Max 300 dpi FUNAI printhead: Max 300 dpi
PRINT SPEED	1/2" printer: Max 220m/min @ 300x100dpi 1" printhead: Max 40m/min @ 300 dpi FUNAI printhead: Max 40m/min @ 300x200 dpi
LENGTH TEMPLATE	Maximum length of template up to 2000mm
MENU LANGUAGES	English (default), German, Vietnamese, Chinese, Korean, Russian, Turkish, Portuguese, Spanish, Polish, Greek, Italian & many others
PRINTABILITY	Text, Counter, Box/Lot, Datetime, Expiry Date, Julian Date, Shiftcode, Image Database (TXT,CSV, SQL,PDF,JSON [PC software]) Barcodes (Code 11, Code 39, Code 128, EAN, QR, Datamatrix, GS1 Datamatrix, ect.) Dynamic Real-Time Printing (Print Online Data)
PRINT HEADS	Connects up to 4 same or different printheads
MEMORY	Store up to 100000 messages on the printer' s memory
INK MANAGEMENT	Automatic recognition ink type and ink parameters Nozzle warming, auto-jet and self-cleaning capabilities to extend cartridge lifetime Nozzle status checking Variety of TIJ 2.5, 1-Onch, FUNAI inks type and colors available
ADVANCE	Free design in template up to 1-Inch (12.7mm, 13.5mm, 25.4mm) Integrate with other devices (PLC, Camera, Check-weigher, ect.) via
RS485, NETWORK	Real-time Printing
USB	Data upload, Backup & Recovery via USB

WYSIWYG (what you see is what you get)

HP1000 / OJ100H

Rugged TIJ Single Head Handheld Printer

HP1000

(1/2" Printhead)

HP1000 with High-speed TIJ 1/2" Print Head for quality printing



OJ100H

(1" Printhead)

OJ100H with TIJ 1-Inch Print Head for big printing size & range



Key Features

Designed to be sturdy and built to last while maintaining mobility and ease of use.

Best Suited For	Printing on All Types of Surfaces
Screen Area	OLED Screen
Print Quality	HP1000: 600 dpi @ Print Speed up to 30m/min OJ100H: 300 dpi @ Print Speed up to 30m/min
Print heads	Single printhead (HP1000: 1/2" printhead, OJ100H: 1" printhead)

Benefits

Product Design	Portable and handheld for wireless printing
User Interface	Plug & Play
Ink Selection	HP1000: Wide selection of TIJ2.5 Aqueous, Solvents inks OJ100H: Wide selection of TIJ 1-Onch Aqueous, Solvents inks

Specifications

RESOLUTION	HP1000: Max 600 dpi OJ100H: Max 300 dpi
PRINT SPEED	HP1000: 600 dpi @ Print Speed up to 30m/min OJ100H: 300 dpi @ Print Speed up to 30m/min
LENGTH TEMPLATE	Maximum length of template up to 1500mm
MENU LANGUAGES	English (default), Chinese, Japanese & many others
PRINTABILITY	Text, Counter, Box/Lot, Datetime, Expiry Date, Julian Date, Shiftcode, Image Barcodes (Code 11, Code 39, Code 128, EAN, QR, Datamatrix, GS1 Datamatrix, ect.)
PRINT HEADS	Single printhead (HP1000: 1/2" printhead, OJ100H: 1" printhead)
MEMORY	Store up to 10 messages on the printer' s SD card
INK MANAGEMENT	Automatic recognition ink type and ink parameters Auto-jet and cleaning capabilities to extend cartridge lifetime Nozzle status checking Variety of TIJ 2.5, 1-Inch inks type and colors available
ADVANCE	Free design in template up to 1/2" and 1" (12.7mm, 2.54mm)
PC Software	Add & Send Message to Printer
USB	Connects with PC Software
Power	4pcs of AA Type Rechargeable Battery



HP1200 / OJ110H

Rugged TIJ Single Head Handheld Printer

HP1200

(1/2" Printhead)

HP1200 with High-speed TIJ 1/2" Print Head for quality printing



OJ110H

(1" Printhead)

OJ110H with TIJ 1-Inch Print Head for big printing size & range



Key Features

Designed to be sturdy and built to last while maintaining mobility and ease of use.

Best Suited For	Printing on All Types of Surfaces
Screen Area	2.8-Inch Touch Screen
Print Quality	HP1200: 600 dpi @ Print Speed up to 30m/min OJ110H: 300 dpi @ Print Speed up to 30m/min
Print heads	Single printhead (HP1200: 1/2" printhead, OJ110H: 1" printhead)

Benefits

Product Design	Portable and handheld for wireless printing
User Interface	Plug & Play
Ink Selection	HP1200: Wide selection of TIJ2.5 Aqueous, Solvents inks OJ110H: Wide selection of TIJ 1-Onch Aqueous, Solvents inks



Specifications

RESOLUTION	HP1200: Max 600 dpi OJ110H: Max 300 dpi
PRINT SPEED	HP1200: 600 dpi @ Print Speed up to 30m/min OJ110H: 300 dpi @ Print Speed up to 30m/min
LENGTH TEMPLATE	Maximum length of template up to 1500mm
MENU LANGUAGES	English (default), Chinese, Japanese & many others
PRINTABILITY	Text, Counter, Box/Lot, Datetime, Expiry Date, Julian Date, Shiftcode, Image Barcodes (Code 11, Code 39, Code 128, EAN, QR, Datamatrix, GS1 Datamatrix, ect.)
PRINT HEADS	Single printhead (HP1200: 1/2" printhead, OJ110H: 1" printhead)
MEMORY	Store up to 50 messages on the printer's SD card
INK MANAGEMENT	Automatic recognition ink type and ink parameters Auto-jet and cleaning capabilities to extend cartridge lifetime Nozzle status checking Variety of TIJ 2.5, 1-Inch inks type and colors available
ADVANCE	Free design in template up to 1/2" and 1" (12.7mm, 2.54mm)
PC Software	Add & Send Message to Printer
USB	Connects with PC Software
Power	2pcs of 18650 Type Lithium Battery

HP1600 / OJ120H

Rugged TIJ Single Head Handheld Printer

HP1600

(1/2" Printhead)

HP1600 with High-speed TIJ 1/2" Print Head for quality printing



OJ120H

(1" Printhead)

OJ120H with TIJ 1-Inch Print Head for big printing size & range



Key Features

Designed to be sturdy and built to last while maintaining mobility and ease of use.

Best Suited For	Printing on All Types of Surfaces
Screen Area	4-Inch Touch Screen
Print Quality	HP1600: 600 dpi @ Print Speed up to 30m/min OJ120H: 300 dpi @ Print Speed up to 30m/min
Print heads	Single printhead (HP1600: 1/2" printhead, OJ120H: 1" printhead)

Benefits

Sleek & Compact Design	User friendly 4" touchscreen color display with WYSIWYG graphical interface
Product Design	Portable and handheld for wireless printing
User Interface	Plug & Play
Ink Selection	HP1600: Wide selection of TIJ2.5 Aqueous, Solvents inks OJ120H: Wide selection of TIJ 1-Onch Aqueous, Solvents inks

Specifications

RESOLUTION	HP1600: Max 600 dpi OJ120H: Max 300 dpi
PRINT SPEED	HP1600: 600 dpi @ Print Speed up to 30m/min OJ120H: 300 dpi @ Print Speed up to 30m/min
LENGTH TEMPLATE	Maximum length of template up to 1500mm
MENU LANGUAGES	English (default), German, Vietnamese, Chinese, Korean, Russian, Turkish, Portuguese, Spanish, Polish, Greek, Italian & many others
PRINTABILITY	Text, Counter, Box/Lot, Datetime, Expiry Date, Julian Date, Shiftcode, Image Database (TXT,CSV, SQL,PDF,JSON [PC software]) Barcodes (Code 11, Code 39, Code 128, EAN, QR, Datamatrix, GS1 Datamatrix, ect.) Dynamic Real-Time Printing (Print Online Data)
PRINT HEADS	Single printhead (HP1600: 1/2" printhead, OJ120H: 1" printhead)
MEMORY	Store up to 10000 messages on the printer' s memory
INK MANAGEMENT	Automatic recognition ink type and ink parameters Auto-jet and cleaning capabilities to extend cartridge lifetime Nozzle status checking Variety of TIJ 2.5, 1-Inch inks type and colors available
ADVANCE	Free design in template up to 1/2" and 1" (12.7mm, 2.54mm)
USB	Data upload, Backup & Recovery via USB
Power	2pcs of 18650 Type Lithium Battery





Peripheral Products

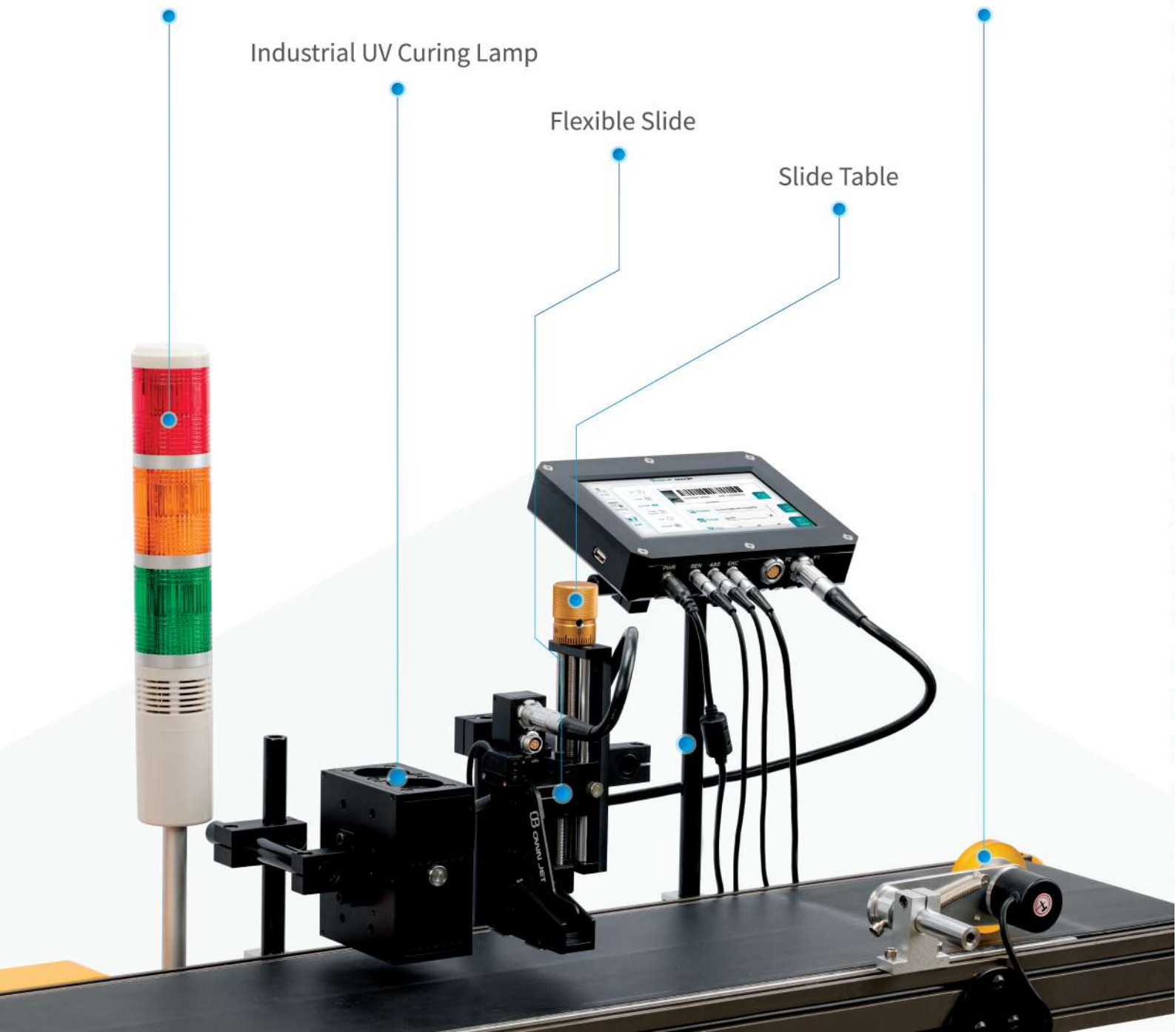
3-color LED Alarm Lamp

Synchronous Encoder

Industrial UV Curing Lamp

Flexible Slide

Slide Table



Versatile Ink Solution

Solvents ink

TIJ 2.5 1/2" Solvents ink

TIJ 1-Inch Solvents ink

TIJ FUNAI Solvents ink

PIJ Solvents ink

Aqueous ink

TIJ 2.5 1/2" Aqueous ink

TIJ 1-Inch Aqueous ink

TIJ FUNAI Aqueous ink

PIJ Aqueous ink

Oils ink

PIJ Oils ink

Bulk ink system

TIJ 2.5 1/2" Aqueous Bulk ink system

TIJ 1-Inch Aqueous Bulk ink system

TIJ 2.5 1/2" Solvents Bulk ink system

TIJ 1-Inch Solvents Bulk ink system

PIJ Solvents Bulk ink system

UV ink

TIJ 2.5 1/2" UV ink

TIJ 2.5 1/2" UV ink





SinLeTai **DAILYJET** **DOWNJET**

A. 5F.-2, No. 351, Sec. 2, Zhongshan Rd., Zhonghe Dist., New Taipei City 235, Taiwan
新北市中和區中山路二段351號5樓之2 (華隆經貿廣場)

M. frank@sinletai.com.tw feichou@sinletai.com.tw

T. +886-2-8732 6140

F. +886-2-8732 6406



